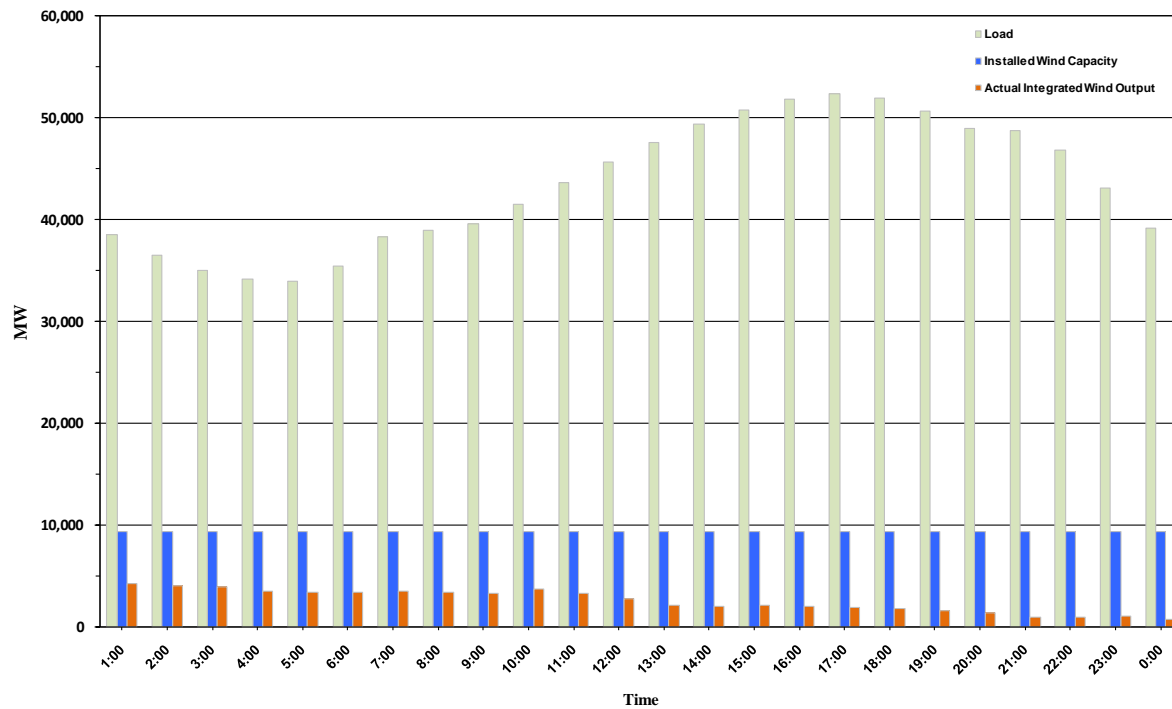




ERCOT Grid Operations Wind Penetration Report: 08/25/10

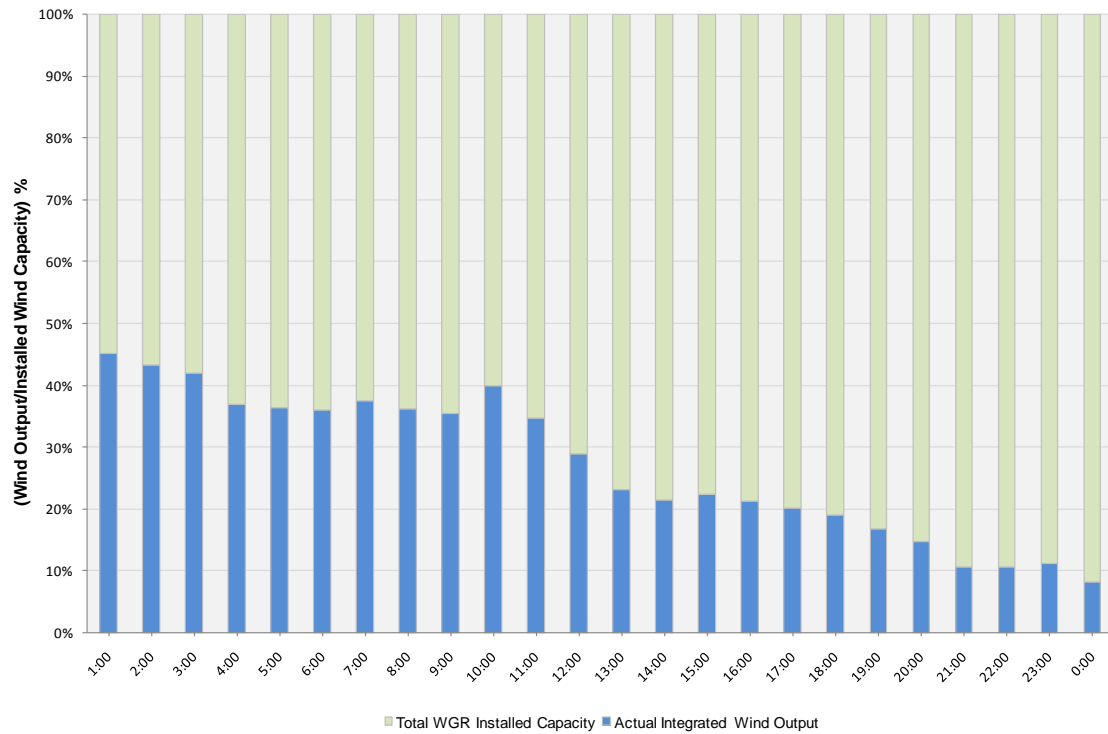
Peak Load	52,368 MW
Load Peak Hour	17
Wind Record 06/12/10	7016 MW
Max Wind value	4454 MW
Wind Peak Hour	00:35:36
Wind Penetration %	11.65

Hourly Average Actual Load vs. Actual Wind Output
08-25-2010

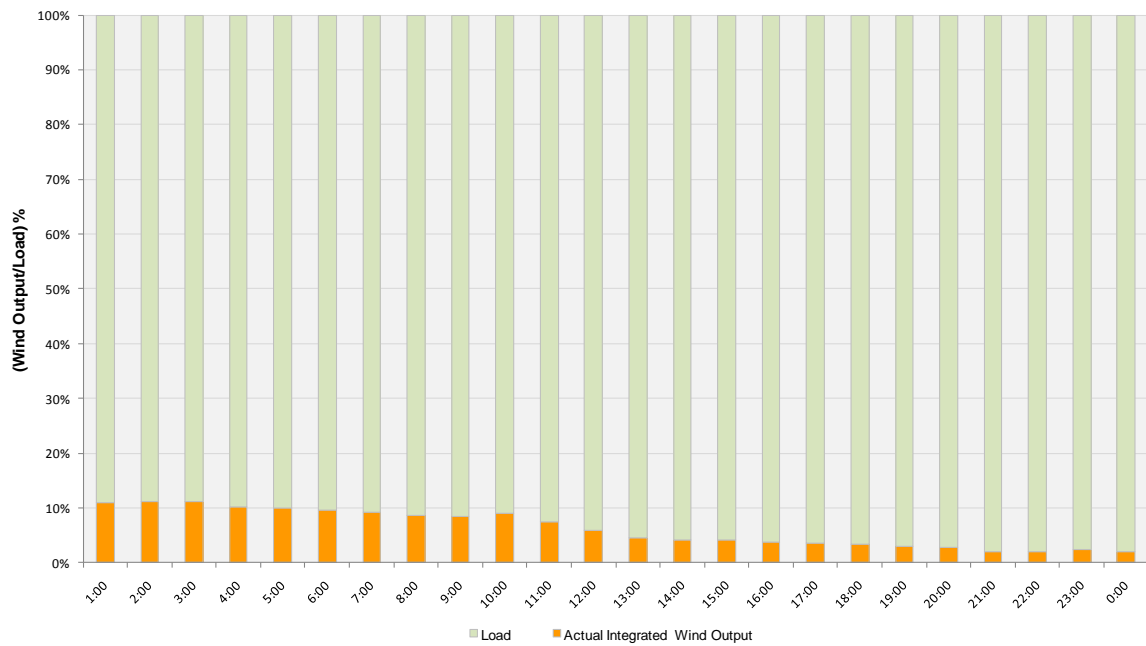




Actual Wind Output as a Percentage of the Total Installed Wind Capacity
08-25-2010



Actual Wind Output as a Percentage of the ERCOT Load
08-25-2010





ERCOT Load vs. Actual Wind Output 08/18/10 - 08/25/10

